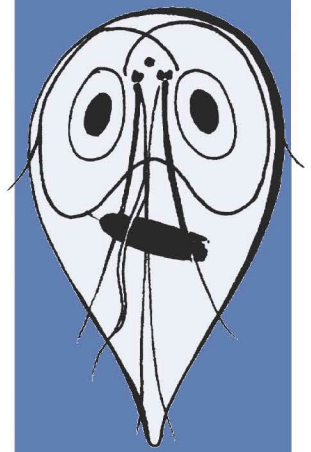


# Relative Size Comparisons

## **Giardia Trophozoite**

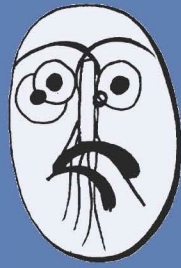
12-15 microns long

5-7 microns wide



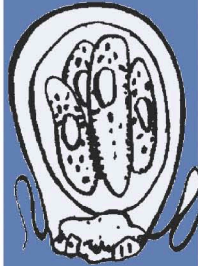
## **Giardia Cyst**

8-12 microns long



## **Cryptosporidia**

4-6 microns approx.



## **E. Coli**

3-8 microns long

0.5-0.8 microns  
diameter



## **General Ecology, Inc. Water Purifiers**

Cartridge Opening  
0.4 microns absolute

